



Natural variability in the surface ocean carbonate ion concentration

N. S. Lovenduski¹, M. C. Long², and K. Lindsay²

¹Department of Atmospheric and Oceanic Sciences and Institute of Arctic and Alpine Research, University of Colorado, Boulder, Colorado, USA

²Climate and Global Dynamics Laboratory, National Center for Atmospheric Research, Boulder, Colorado, USA

Correspondence to: N. S. Lovenduski (nicole.lovenduski@colorado.edu)

Received: 25 July 2015 – Published in Biogeosciences Discuss.: 13 August 2015

Revised: 20 October 2015 – Accepted: 23 October 2015 – Published: 5 November 2015

Abstract. We investigate variability in the surface ocean carbonate ion concentration ($[\text{CO}_3^{2-}]$) on the basis of a long control simulation with an Earth System Model. The simulation is run with a prescribed, pre-industrial atmospheric CO_2 concentration for 1000 years, permitting investigation of natural $[\text{CO}_3^{2-}]$ variability on interannual to multi-decadal timescales. We find high interannual variability in surface $[\text{CO}_3^{2-}]$ in the tropical Pacific and at the boundaries between the subtropical and subpolar gyres in the Northern Hemisphere, and relatively low interannual variability in the centers of the subtropical gyres and in the Southern Ocean. Statistical analysis of modeled $[\text{CO}_3^{2-}]$ variance and autocorrelation suggests that significant anthropogenic trends in the saturation state of aragonite ($\Omega_{\text{aragonite}}$) are already or nearly detectable at the sustained, open-ocean time series sites, whereas several decades of observations are required to detect anthropogenic trends in $\Omega_{\text{aragonite}}$ in the tropical Pacific, North Pacific, and North Atlantic. The detection timescale for anthropogenic trends in pH is shorter than that for $\Omega_{\text{aragonite}}$, due to smaller noise-to-signal ratios and lower autocorrelation in pH. In the tropical Pacific, the leading mode of surface $[\text{CO}_3^{2-}]$ variability is primarily driven by variations in the vertical advection of dissolved inorganic carbon (DIC) in association with El Niño–Southern Oscillation. In the North Pacific, surface $[\text{CO}_3^{2-}]$ variability is caused by circulation-driven variations in surface DIC and strongly correlated with the Pacific Decadal Oscillation, with peak spectral power at 20–30-year periods. North Atlantic $[\text{CO}_3^{2-}]$ variability is also driven by variations in surface DIC, and exhibits weak correlations with both the North Atlantic Oscillation and the Atlantic Multidecadal Oscillation. As the scientific community seeks to detect the anthropogenic influence on ocean carbonate chemistry, these results will aid the inter-

pretation of trends calculated from spatially and temporally sparse observations.

1 Introduction

The global ocean has absorbed $\sim 30\%$ of the carbon dioxide (CO_2) released by human activities since 1765 (Ciais and Sabine, 2013). While ocean uptake of CO_2 plays a key role in mitigating anthropogenic climate change, it also modifies ocean carbonate chemistry (Feely et al., 2004). The dissolution of excess CO_2 in the surface ocean drives an increase in the dissolved inorganic carbon (DIC) concentration without changing the alkalinity (Alk). The result is a surface ocean characterized by decreasing carbonate ion concentration ($[\text{CO}_3^{2-}]$) and pH (Feely et al., 2009). This acidification of the surface ocean reduces the saturation state of the calcium carbonate minerals calcite and aragonite (Ω_{calcite} and $\Omega_{\text{aragonite}}$, respectively) and may reduce biogenic calcification and enhance calcium carbonate dissolution (Doney et al., 2009).

Observations collected at sustained open ocean time series stations (e.g., HOT, BATS) indicate significant anthropogenic changes in surface DIC, $[\text{CO}_3^{2-}]$, pH, and $\Omega_{\text{aragonite}}$ relative to background natural variability (Bates et al., 2014). The detection of statistically robust trends in carbonate chemistry at these stations benefits from frequent sampling (3–16 times per year), long records (15 to 30 years), and low natural variability (Le Quéré et al., 2000; Brix et al., 2004; Bates et al., 2014). In the rest of the global ocean, however, sparse spatial and temporal sampling, coupled with potentially large natural variability challenges the detection of anthropogenic changes in carbonate chemistry from observa-

tions. In the equatorial Pacific, Sutton et al. (2014) report decreasing pH from 1997 to 2011 using mooring observations, but they attribute approximately 40 % of this decrease to natural variability. Based on measurements from repeat hydrographic surveys, Feely et al. (2012) report an average decrease in $\Omega_{\text{aragonite}}$ and Ω_{calcite} of 0.34 \% yr^{-1} in the Pacific Ocean. In the South Pacific, the trend is primarily driven by uptake of anthropogenic CO_2 , while the trends in the North Pacific Subtropical Gyre and the California Current are attributed to natural variability in ocean circulation. On the global scale, Lauvset et al. (2015) find a mean rate of decrease in surface ocean pH of 0.0018 yr^{-1} over 1991–2011, using observations of $f\text{CO}_2$ aggregated into 17 biogeographical biomes. They find a substantial amount of interannual variability in pH in many of the biomes (RMSE ranging from 0.01 and 0.04 pH units) that is of a similar magnitude to the cumulative trend in pH.

Internal climate variability arises from the coupled interaction of atmospheric, oceanic, terrestrial, and cryospheric processes (Deser et al., 2012a) and complicates our ability to detect anthropogenically forced trends from sparse observations. In the tropics, the dominant mode of internal climate variability is the El Niño–Southern Oscillation (ENSO). In the extratropics, three major climate modes drive variability: the North Atlantic Oscillation (NAO), the Pacific Decadal Oscillation (PDO), and the Southern Annular Mode (SAM). Studies conducted using ocean physical and biogeochemical models run in hindcast mode (i.e., forced with the historically observed atmospheric state) suggest that ENSO, NAO, PDO, and SAM impact regional ocean biogeochemistry. Le Quééré et al. (2000) and Long et al. (2013) find reduced CO_2 outgassing in the tropical Pacific during El Niño events as a result of changes in dynamics reducing the vertical advection and diffusion of DIC into the surface ocean. In the North Atlantic, the NAO drives shifts of the subpolar/subtropical intergyre boundary that affect the vertical and lateral advection of DIC and air–sea CO_2 flux (Thomas et al., 2008). On the basis of seven biogeochemical models run in hindcast mode, McKinley et al. (2006) show that the positive phase of the PDO is associated with an increased surface DIC tendency in the subtropical and western subpolar gyres of the North Pacific. In the Southern Ocean, multiple hindcast modeling studies find large interannual variability in surface DIC and Alk driven by the SAM (Lenton and Matear, 2007; Lovenduski et al., 2007; Verdy et al., 2007).

Model hindcast studies are useful for quantifying the impact of climate variability on ocean carbonate chemistry, but are limited in their temporal scope to the period of time for which we have abundant observations of the global atmosphere (typically 1948 to the present day). Large-scale modes of climate variability such as PDO, NAO, and SAM have spectral power at low frequencies. While hindcast studies can capture the observed chronology of these modes, they cannot capture the full spectrum of internal variability in the climate system. Long model simulations (order 1000 years) can cap-

ture multiple realizations of climate variability on decadal and multi-decadal timescales, and have shown to be useful in the study of ocean carbon cycle variability on these timescales (Doney et al., 2006; Séférian et al., 2013, 2014; Keller et al., 2014; Lehner et al., 2015; Resplandy et al., 2015).

Here, we assess the influence of internal climate variability on surface ocean carbonate chemistry by analyzing output from a 1000-year control simulation of a coupled Earth System Model. Interaction between the model's atmosphere, ocean, terrestrial biosphere, and cryosphere generates internal climate variability on timescales ranging from interannual to multi-decadal and longer. We aim to quantify and mechanistically understand the drivers of variability in surface ocean carbonate chemistry on these timescales. In doing so, we will gain perspective on the statistical confidence in the anthropogenic carbonate chemistry trends reported in the literature.

Our study builds upon two recent studies of natural variability in ocean carbonate chemistry from long integrations of Earth System Models (ESMs). Friedrich et al. (2012) use MPI-ESM to quantify the natural variability in surface $\Omega_{\text{aragonite}}$ and compare it to the anthropogenic trend over the years 800–2099. They suggest that recent anthropogenic trends in surface $\Omega_{\text{aragonite}}$ exceed natural variability by 30 times on regional scales, but do not focus on detectability in the observational record or on the mechanisms driving variability. Séférian et al. (2013) analyze output from a fully coupled 1000-year control simulation of IPSL-CM5A-LR and describe decadal to multi-decadal variability in air–sea CO_2 flux and its driving factors in the North Atlantic, North Pacific, and the Southern Ocean. They find that a large fraction of the variance in CO_2 flux is driven by internal climate variability in the various regions, due to circulation-mediated variability in the upwelling of DIC to the surface ocean, but only very briefly discuss the implications of this for carbonate ion variability. Here, we analyze output from a 1000-year control simulation of the Community Earth System Model (CESM) with a focus on quantifying and understanding the drivers of variability in surface ocean carbonate chemistry. Unlike the simulation analyzed in Friedrich et al. (2012), the CESM control simulation does not include any external forcing, such as anthropogenic CO_2 emissions, volcanic eruptions, or solar variability. This allows us to cleanly ascribe surface carbonate variability to internal variability (unforced natural variability) of the physical climate system. Further, unlike the simulations analyzed in Friedrich et al. (2012) and Séférian et al. (2013), we analyze output from a simulation with constant, prescribed atmospheric CO_2 concentration, so variability in ocean biogeochemistry is only affected by the physical state of the atmosphere and ocean and not by variability in atmospheric CO_2 . This simplifies our quantification of the mechanisms driving variability in carbonate chemistry. Finally, we focus on variability in surface ocean $[\text{CO}_3^{2-}]$, as it is the primary source of variability in $\Omega_{\text{aragonite}}$.

and is likely to be influenced by internal climate variability ($[\text{CO}_3^{2-}] \approx \text{Alk} - \text{DIC}$). As such, our results will be useful for determining the detectability of anthropogenic trends in $\Omega_{\text{aragonite}}$ over background internal climate variability on a global scale.

2 Model description

We analyze output from a 1000-year pre-industrial control simulation of the Community Earth System Model. CESM is a state-of-the-art coupled climate model consisting of atmosphere, ocean, land, and sea ice component models (Hurrell et al., 2013). The atmosphere model is the Community Atmosphere Model, version 4 (CAM4), with a horizontal resolution of $1.25^\circ \times 0.9^\circ$ and 26 vertical levels (Neale et al., 2013). The Community Land Model (Lawrence et al., 2011) operates on the same horizontal grid as CAM4. The sea ice model is the Community Ice Code, version 4 (Hunke and Lipscomb, 2008), and the dynamic land ice component is inactive. The ocean physical model is identical to the ocean component of the Community Climate System Model version 4 (CCSM4) (Danabasoglu et al., 2012), except that shortwave absorption in the ocean is computed using prognostic chlorophyll fields, rather than a fixed satellite-derived monthly climatology as in CCSM4. The ocean model has nominal 1° horizontal resolution and 60 vertical levels. Mesoscale eddy transport is parameterized with an updated version of (Gent and McWilliams, 1990), where the eddy-induced advection coefficient, κ , is diagnosed as a function of space and time. Diapycnal mixing is represented using the K-Profile Parameterization of Large et al. (1994), and mixed-layer restratification by submesoscale eddies is parameterized using the method of Fox-Kemper et al. (2011). The biogeochemical-ecosystem ocean model incorporates multi-nutrient co-limitation on phytoplankton growth and specific phytoplankton functional groups (Moore et al., 2004, 2013), full carbonate system thermodynamics, sea–air CO_2 fluxes, and a dynamic iron cycle (Doney et al., 2006; Moore and Braucher, 2008). Phytoplankton calcification in the model is unaffected by variations in the saturation state of calcite or aragonite. Previous studies conducted with hindcast simulations of this model configuration reveal that the ocean physical state and air–sea CO_2 fluxes compare favorably with observations (Danabasoglu et al., 2012; Long et al., 2013).

Biogeochemical fields were initialized using data-based climatologies; for instance, DIC was from the Global Ocean Data Analysis Project (GLODAP; Key et al., 2004) and nutrients were from the World Ocean Atlas (Garcia et al., 2010). Subsequently, the fully coupled model was integrated for a period of 1000 years to allow the deep ocean to approach equilibrium; the tracer fields resulting from this spin-up procedure were used to initialize a 1000-year control simulation (Lindsay et al., 2014), in which atmospheric CO_2 was held constant at preindustrial levels ($p\text{CO}_2^{\text{atm}} = 284.7$ ppm).

By prescribing atmospheric CO_2 , this control simulation generates sea–air CO_2 flux variance that differs slightly from a control simulation using prognostic atmospheric CO_2 (Lindsay et al., 2014), owing to a lack of communication between land and ocean carbon reservoirs. Following Doney et al. (2006), variability in the control simulation is generated entirely from internal processes. During the first 100 years of the simulation, ocean $[\text{CO}_3^{2-}]$ was not saved to disk, so our analysis is limited to the final 900 years of the simulation. Over this time, the global ocean drift in surface $[\text{CO}_3^{2-}]$ is small ($0.0029 \text{ mmol m}^{-3} \text{ yr}^{-1}$).

3 Model evaluation

Confidence in our interpretation of model output relies on the ability of the model to reproduce realistic estimates of mean surface $[\text{CO}_3^{2-}]$ and its variability. We compare the annual-mean surface $[\text{CO}_3^{2-}]$ in the pre-industrial control simulation with reconstructed, pre-industrial surface $[\text{CO}_3^{2-}]$ in Fig. 1. Pre-industrial surface $[\text{CO}_3^{2-}]$ is reconstructed from observations of pre-industrial surface DIC (present-day DIC minus anthropogenic DIC) and present-day Alk as estimated by GLODAP (Key et al., 2004), combined with present-day estimates of temperature, salinity, silicate, and phosphate from the World Ocean Atlas (Locarnini et al., 2010; Antonov et al., 2010; Garcia et al., 2010) using a program developed for CO_2 system calculations (CO2SYS) with the preferred dissociation constants. Computing $[\text{CO}_3^{2-}]$ this way is not strictly correct, owing to non-linear relationships between $[\text{CO}_3^{2-}]$ and state variables, but no synthesized climatology of $[\text{CO}_3^{2-}]$ from bottle sites exists. The model captures the large-scale distribution of surface $[\text{CO}_3^{2-}]$ as estimated by the pre-industrial reconstruction (Fig. 1). Pre-industrial surface $[\text{CO}_3^{2-}]$ is elevated in the tropical oceans, with the exception of the tropical Pacific cold tongue region, where persistent upwelling of DIC maintains low surface $[\text{CO}_3^{2-}]$. High latitude, pre-industrial surface $[\text{CO}_3^{2-}]$ is substantially lower than that in the tropics, due to upwelling of waters enriched in DIC and enhanced CO_2 solubility in these cold regions (Feely et al., 2004; Fabry et al., 2009). The model-estimated, pre-industrial surface $[\text{CO}_3^{2-}]$ is noticeably lower than observed. The globally averaged surface $[\text{CO}_3^{2-}]$ bias in the model is -16 mmol m^{-3} , excluding the Arctic Ocean and marginal seas. This model bias is caused by low biases in both surface Alk and DIC. The former bias is larger in magnitude and results from a combination of the prescribed carbonate dissolution profile, the representation of calcification, and a lack of riverine inputs in the model (Long et al., 2013).

We investigate the vertical distribution of salinity-normalized DIC (sDIC) and salinity-normalized Alk (sAlk) in the eastern Equatorial Pacific and compare with the vertical distribution of reconstructed pre-industrial sDIC and sAlk from observations in Fig. 2. As we will see later, the response

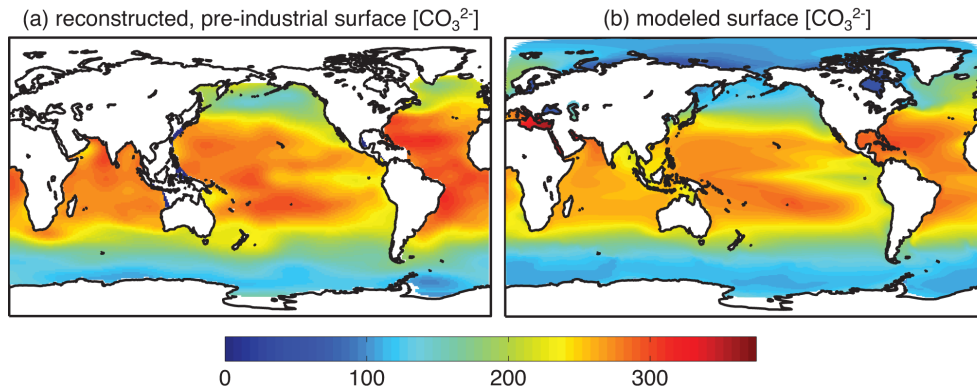


Figure 1. (a) Reconstructed, pre-industrial and (b) model-estimated surface ocean carbonate ion concentration (mmol m^{-3}).

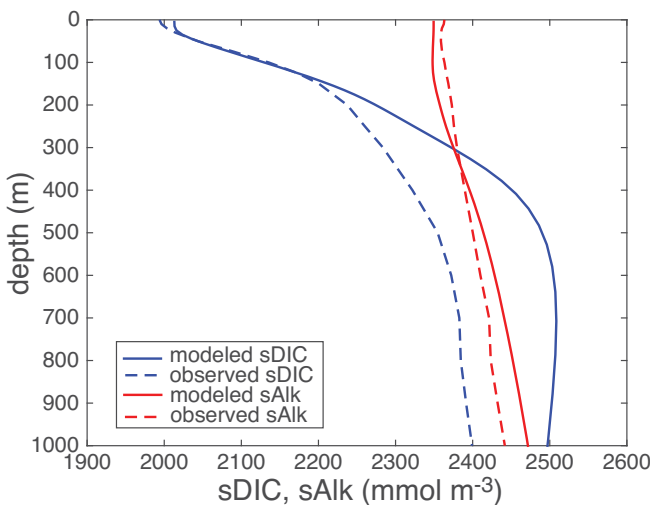


Figure 2. The vertical distribution of pre-industrial sDIC and sAlk in the eastern equatorial Pacific as estimated by the model and reconstructed from observations.

of these tracers to ENSO variability depends on their vertical gradients in this region. We define the eastern equatorial Pacific region according to the corresponding location of the biogeographical biome presented in Fay and McKinley (2014). In our model, the eastern equatorial Pacific is characterized by a large vertical gradient in sDIC, and a relatively small vertical gradient in sAlk, in general agreement with the observations in this region. Notably, the vertical gradient of modeled sDIC in the upper 1000 m is $\sim 25\%$ larger than that estimated from observations. Thus, the influence of ENSO on surface $[\text{CO}_3^{2-}]$ is likely to be slightly exaggerated in the model.

We use the approach outlined in Friedrich et al. (2012) to evaluate simulated interannual variability and to compare it with observations collected at two open-ocean time series stations (BATS and HOT). At the model grid cells corresponding to the observational records, we generate probabil-

ity density distributions of the standard deviation of annual-mean surface $[\text{CO}_3^{2-}]$ over a period of record sampled from the model that is the same length as the observational time series. At BATS, we calculate the standard deviation for 30 independent 30-year periods (Fig. 3a), and at HOT, we calculate the standard deviation for 36 independent 25-year periods (Fig. 3b). These are compared to the interannual standard deviation in de-trended, annual-mean surface $[\text{CO}_3^{2-}]$ from the observational record, which is 30-years long at BATS and 25 years long at HOT (Bates et al., 2014). Figure 3 illustrates that the model underestimates interannual variability as compared to the observational data. This underestimate may be due to the mismatch in the spatiotemporal scales of model and observations; we would expect higher variance in the point-source observational record than in the smoothed model. As a result of the model's low variance bias, we expect our estimate of the detection timescale for the anthropogenic trend in $[\text{CO}_3^{2-}]$ to be biased low, discussed next.

4 Surface carbonate variability and trend detection

We find the highest simulated interannual variability in pre-industrial surface $[\text{CO}_3^{2-}]$ in the eastern equatorial Pacific and at the boundaries between the subtropical and subpolar gyres (Fig. 4a). In the eastern equatorial Pacific, our model simulates a large vertical gradient in $[\text{CO}_3^{2-}]$ ($\approx \text{Alk} - \text{DIC}$; Fig. 2), so variability is likely driven by changes in vertical motion here. The boundaries between the gyres exhibit the largest horizontal gradients in surface $[\text{CO}_3^{2-}]$ (Fig. 1b), so changes in the shape of these gyres could have a large impact on local variability here (Friedrich et al., 2012). In the North Atlantic and North Pacific, the inter-gyre regions exhibit high variance on decadal (Fig. 4b) and longer timescales, as well, suggesting an influence from low-frequency climate variability. Finally, we note that simulated surface $[\text{CO}_3^{2-}]$ exhibits low interannual variability in the Southern Ocean, consistent with previous modeling studies (Orr et al., 2005; Friedrich et al., 2012; Conrad and Lovenduski, 2015).

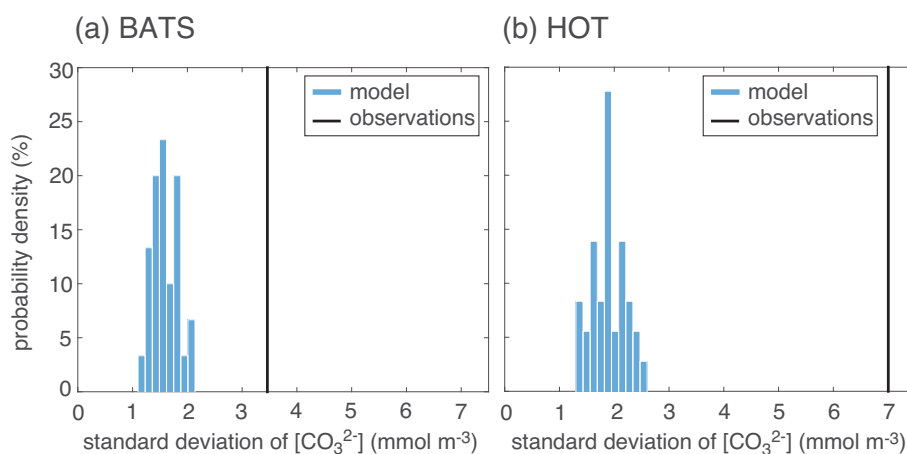


Figure 3. Blue bars: probability density of interannual standard deviation of simulated $[\text{CO}_3^{2-}]$ at (a) BATS, based on 30 independent 30-year periods and (b) HOT, based on 36 independent 25-year periods. Black line: interannual standard deviation of surface $[\text{CO}_3^{2-}]$ at (a) BATS and (b) HOT, based on detrended annual-mean observations.

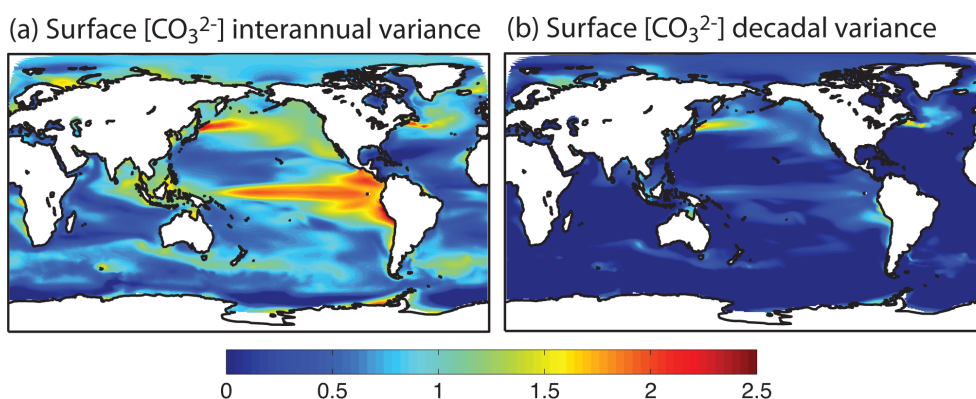


Figure 4. Variance in the surface ocean carbonate ion concentration for (a) annual-mean and (b) 10-year filtered model output ($\log_{10}(\text{mmol m}^{-3})^2$).

How does the magnitude of the variability in surface $[\text{CO}_3^{2-}]$ affect the detection of anthropogenic trends in $\Omega_{\text{aragonite}}$? We use monthly model output to investigate the length of the time series needed to detect an anthropogenic trend in $\Omega_{\text{aragonite}}$ with 90 % confidence, using the method of Weatherhead et al. (1998),

$$n^* = \left[\frac{3.3\sigma_N}{|\omega_0|} \sqrt{\frac{1+\phi}{1-\phi}} \right]^{2/3}. \quad (1)$$

At each location, we calculate the standard deviation (σ_N) and autocorrelation (ϕ) in the de-seasonalized, monthly anomalies of surface $[\text{CO}_3^{2-}]$ and solve for the detection time (n^* , Fig. 5a). This statistical technique has been applied successfully to ocean biogeochemical data in several previous studies (Henson et al., 2010; Beaulieu et al., 2013; Majkut et al., 2014; Lovenduski et al., 2015); it provides a way to quantify the importance of the variance and autocorrelation on the detection of the trend. It differs in practice

from other statistical methods that estimate detectability or time of emergence of the trend (Ilyina et al., 2009; Friedrich et al., 2012; Hauri et al., 2013; Keller et al., 2014), in that it also includes the influence of temporal autocorrelation which affects sample size (Bretherton et al., 1999) and therefore trend detectability (Beaulieu et al., 2013). We note that the Weatherhead et al. (1998) method assumes a first-order auto-regressive process (AR(1)), and previous literature suggests that ocean carbon fluxes may be better represented by a higher-order auto-regressive process (e.g., AR(3); Séférian et al., 2013). As such, our detection times represent minimum values.

The estimate of the detection time is strongly influenced by the size of the anthropogenic trend to be detected (ω_0). Since n^* is proportional to $(1/\omega_0)^{2/3}$, it takes longer to detect smaller trends and vice versa. As the simulation we analyze here is a pre-industrial control, carbonate chemistry is not influenced by anthropogenic factors, and we must turn elsewhere for an estimate of ω_0 . Bates et al. (2014) report

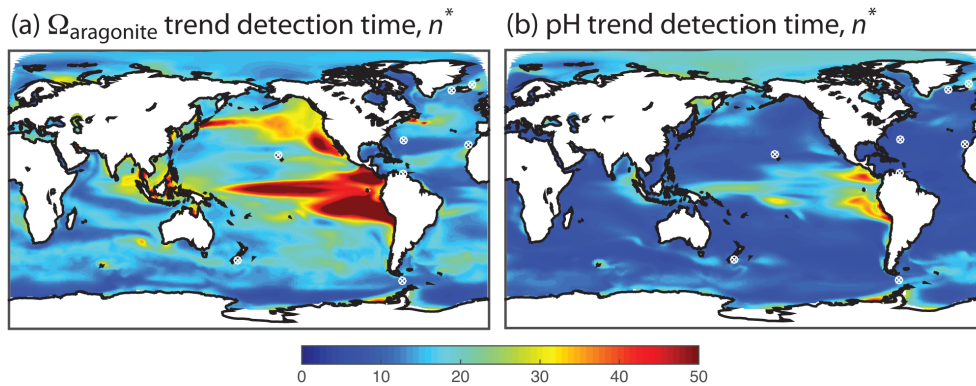


Figure 5. Model-estimated length of time series in years needed to detect (a) an $\Omega_{\text{aragonite}}$ trend of -0.0078 yr^{-1} , and (b) a pH trend of -0.0018 yr^{-1} with at least 90% confidence. White circled xs indicate the locations of the time series stations discussed in Bates et al. (2014).

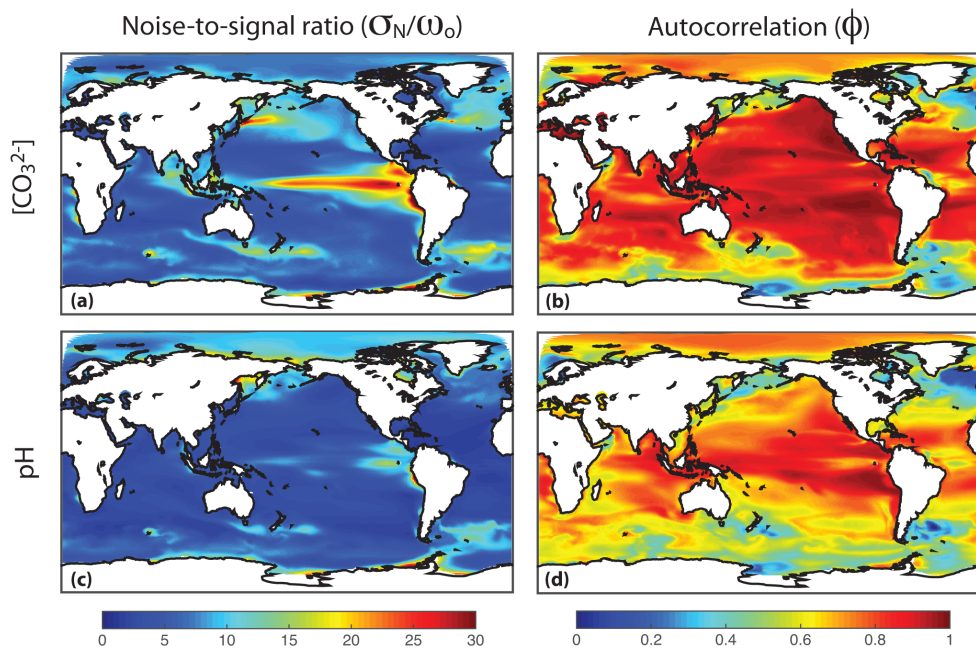


Figure 6. (1st column) The noise-to-signal ratio (σ_N/ω_0 , years) and (2nd column) lag-1 autocorrelation in monthly, de-seasonalized surface ocean (1st row) $[\text{CO}_3^{2-}]$, and (2nd row) pH anomalies.

trends in $\Omega_{\text{aragonite}}$ for seven global open-ocean time series stations and note that the time series exhibit very consistent changes in $\Omega_{\text{aragonite}}$, with an average trend of -0.0078 yr^{-1} . $\Omega_{\text{aragonite}}$ can be approximated as

$$\Omega_{\text{aragonite}} \approx \frac{[\text{CO}_3^{2-}]}{[\text{CO}_3^{2-}]_{\text{sat, aragonite}}}, \quad (2)$$

where $[\text{CO}_3^{2-}]_{\text{sat, aragonite}}$ is the carbonate ion concentration in equilibrium with mineral aragonite, which is primarily a function of pressure. Since variability in surface $[\text{CO}_3^{2-}]_{\text{sat, aragonite}}$ is an order of magnitude smaller than variability in surface $[\text{CO}_3^{2-}]$ (not shown), we approximate the

local, anthropogenic trend in surface $[\text{CO}_3^{2-}]$ (ω_0) as the product of the global-mean, anthropogenic trend in $\Omega_{\text{aragonite}}$ (-0.0078 yr^{-1}) and the local, model-estimated value of $[\text{CO}_3^{2-}]_{\text{sat, aragonite}}$.

The length of the time series needed to detect an anthropogenic $\Omega_{\text{aragonite}}$ trend of -0.0078 yr^{-1} (n^*) is shown in Fig. 5a. This detection time is spatially heterogeneous and ranges from 5 years at some locations to > 50 years at others. Equation (1) reveals that detection time is influenced by the ratio of the standard deviation to the trend (i.e., the noise-to-signal ratio, σ_N/ω_0 , Fig. 6a) and the autocorrelation (ϕ , Fig. 6b). Further, the noise-to-signal ratio spatial pattern (Fig. 6a) is dominated by the noise (i.e., the variance,

Table 1. The standard deviation (σ_N) and autocorrelation (ϕ) in the de-seasonalized monthly anomalies of surface $[\text{CO}_3^{2-}]$ (mmol m^{-3}) and pH, and the length of the time series in years (n^*) needed to detect an $\Omega_{\text{aragonite}}$ trend of -0.0078 yr^{-1} , and a pH trend of -0.0018 yr^{-1} with 90% confidence at the stations discussed in Bates et al. (2014). Boldfaced values of n^* indicate that the detection timescale is shorter than the length of the observational record at that location.

Location	$[\text{CO}_3^{2-}]$			pH		
	σ_N	ϕ	n^*	σ_N	ϕ	n^*
Iceland Sea	5.4	0.69	18	1.88	0.62	17
Irminger Sea	5.5	0.30	13	1.26	0.14	9
BATS	2.4	0.78	12	0.41	0.58	6
ESTOC	2.9	0.80	15	0.41	0.66	7
HOT	2.3	0.94	20	0.50	0.77	9
CARIACO	2.7	0.81	15	0.37	0.81	8
Munida	7.2	0.42	17	1.85	0.41	14

Fig. 4a). Generally, we find long detection times in regions with high variance and high autocorrelation, such as at the boundaries between the subtropical and subpolar gyres in the Northern Hemisphere and in the Pacific cold tongue region, and short detection times in regions with low variance and low autocorrelation, such as in the Southern Ocean (cf. Figs. 6a and b, 5a). We note an additional area with high detection time in the eastern North Pacific Subtropical Gyre, adjacent to the California Current System, where variance is moderate, but autocorrelation is at a maximum.

$[\text{CO}_3^{2-}]$ and $\Omega_{\text{aragonite}}$ are not directly measured in seawater, but rather derived from the measurement of other carbonate system variables, such as $f\text{CO}_2$, pH, DIC, and Alk. It is thus of interest to know how the detection timescale for trends in $[\text{CO}_3^{2-}]$ or $\Omega_{\text{aragonite}}$ compares to the detection timescale for trends in the measured parameters. Figure 5b shows the model-estimated detection time for a spatially uniform pH trend of -0.0018 yr^{-1} (the average pH trend of the seven time series analyzed in Bates et al. (2014), and the global-mean pH trend reported in Lauvset et al., 2015). As for $\Omega_{\text{aragonite}}$, the pH trend detection time is elevated in the equatorial Pacific and inter-gyre regions, but we find much shorter detection times overall for the pH trend (cf. Fig. 5a and b). Figure 6 reveals that the shorter detection time for pH results from lower noise-to-signal ratios and lower autocorrelation than for $[\text{CO}_3^{2-}]$. Thus, results from our model suggest that the anthropogenic trend in pH is detectable sooner than the anthropogenic trend in $\Omega_{\text{aragonite}}$. These results imply that significant trends in pH will emerge before significant trends in $\Omega_{\text{aragonite}}$ at nearly every location in the ocean (with perhaps the exception of the Arctic Ocean).

We detail the model-estimated detection times for trends in $\Omega_{\text{aragonite}}$ and pH at the seven open ocean time series sites (Bates et al., 2014) in Table 1. For reference, the locations of

the time series sites are shown as white circled xs in Fig. 5. The time series sites are ideally located in places with low variability in $[\text{CO}_3^{2-}]$ and pH, so significant trends emerge more quickly there relative to other locations with high variance in these properties, such as the equatorial Pacific and inter-gyre regions (Fig. 4). According to our model calculations, the observational record is of sufficient length to detect the anthropogenic trends in $\Omega_{\text{aragonite}}$ and pH at all stations except Munida in the Southern Hemisphere, where the $\Omega_{\text{aragonite}}$ trend is not yet detectable (Table 1). Bates et al. (2014) report significant (at the 99% level) decreases in $\Omega_{\text{aragonite}}$ and pH at all stations, with the exception of the Iceland Sea, where the trend in $\Omega_{\text{aragonite}}$ is not significant. That the model and observational records both suggest detectable anthropogenic trends at the time series sites is encouraging, but the agreement must be interpreted with some caution. We previously demonstrated that the model underestimates inter-annual variability at two of these sites, and our calculation of detection time from model output (see Eq. 1) assumes perfect temporal coverage at the sites. Taken together, the model detection time at the time series sites is likely to be an underestimate.

5 Modes and drivers of variability in surface carbonate

Given the important role of variance in trend detection, and the high magnitude of surface $[\text{CO}_3^{2-}]$ variance in the Tropical Pacific, North Pacific, and North Atlantic (Fig. 4), it behooves us to characterize and understand the large-scale drivers of variability in these regions. Figure 7a shows the leading empirical orthogonal function (EOF) in tropical Pacific (18° S – 18° N) surface $[\text{CO}_3^{2-}]$. This EOF captures 55% of the interannual variance in tropical Pacific surface $[\text{CO}_3^{2-}]$ and its spatial pattern resembles that of ENSO SST variability. The wavelet power spectrum of the leading principal component (PC) in this region shows statistically significant spectral power on timescales associated with ENSO variability (3–7 years; Fig. 8a). We construct an ENSO index, defined as the annual-mean SST in a box bounded by 5° S to 5° N and 120 – 170° W (Niño 3.4 region), from pre-industrial control simulation model output. We note that, while the main characteristics of ENSO are well-captured by the model, the overall magnitude of ENSO in CCSM4 is overestimated (Deser et al., 2012b). Nevertheless, the modeled ENSO index is highly correlated with the leading PC of surface $[\text{CO}_3^{2-}]$ ($r = -0.94$). This suggests that ENSO exerts a strong control on surface $[\text{CO}_3^{2-}]$ variability in the tropical Pacific.

We investigate the drivers of variability in tropical Pacific surface $[\text{CO}_3^{2-}]$ by decomposing the leading EOF into contributions from surface DIC, Alk, temperature (T), and salinity

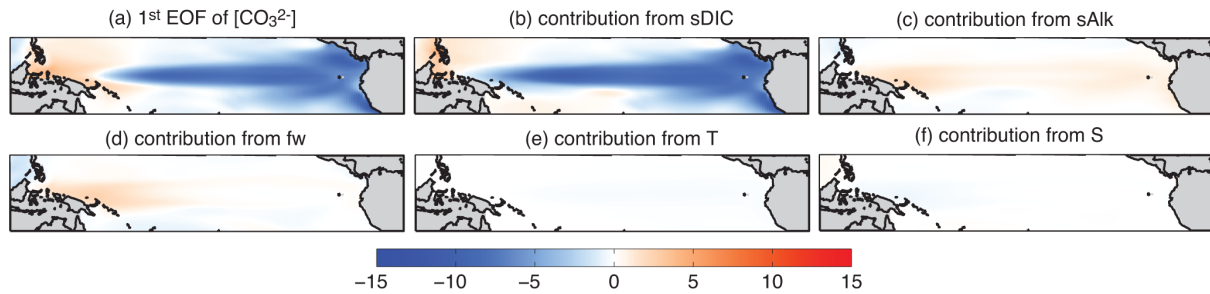


Figure 7. (a) Leading EOF of tropical Pacific surface ocean $[\text{CO}_3^{2-}]$, and the contributions from (b) sDIC, (c) sAlk, (d) freshwater, (e) temperature, and (f) salinity as in Eq. (4) (mmol m^{-3}).

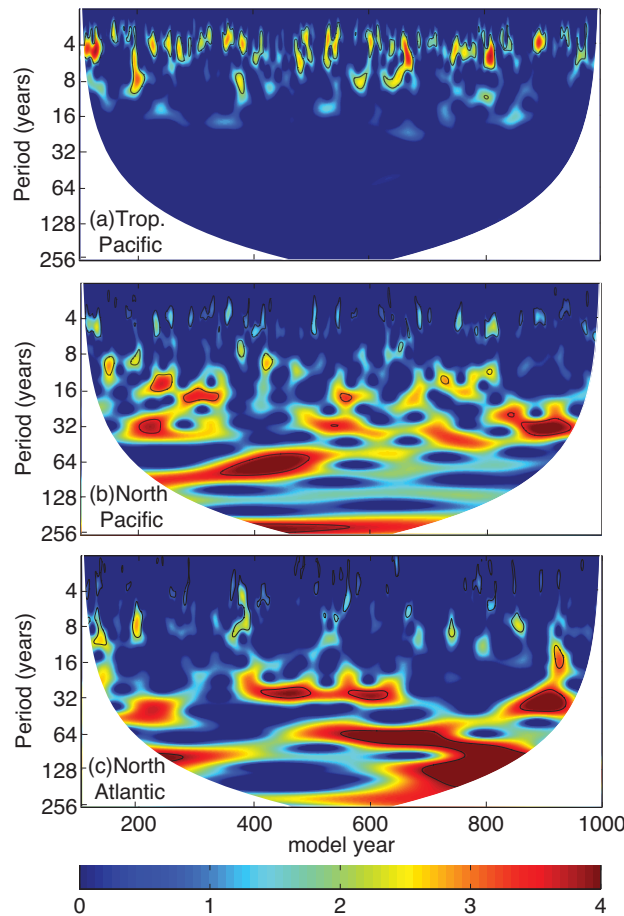


Figure 8. The wavelet time-frequency spectrum for the leading principal component of surface ocean $[\text{CO}_3^{2-}]$ in the (a) tropical Pacific, (b) North Pacific, and (c) North Atlantic regions (mmol m^{-3})². Black contours indicate statistically significant (> 95 %) spectral power.

(S) using a linear Taylor expansion,

$$\Delta [\text{CO}_3^{2-}] = \frac{\partial [\text{CO}_3^{2-}]}{\partial \text{DIC}} \Delta \text{DIC} + \frac{\partial [\text{CO}_3^{2-}]}{\partial \text{Alk}} \Delta \text{Alk} + \frac{\partial [\text{CO}_3^{2-}]}{\partial T} \Delta T + \frac{\partial [\text{CO}_3^{2-}]}{\partial S} \Delta S, \quad (3)$$

where the Δ terms are the perturbations in state variables associated with ENSO, which we estimate using the regression

coefficients of the local value with the leading PC of surface $[\text{CO}_3^{2-}]$ in the tropical Pacific region, and the partial derivatives are estimated from CO2SYS using finite difference approximation. We separate the contribution from freshwater (fw) fluxes on DIC and Alk by expanding the derivatives to include sDIC and sAlk (see Appendix for more details). Sub-

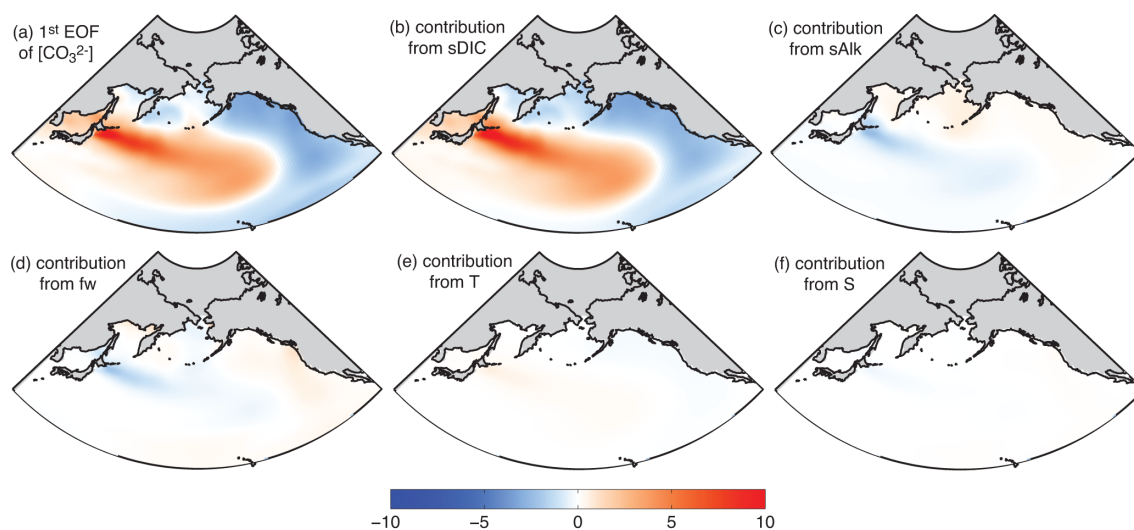


Figure 9. As in Fig. 7, but for the North Pacific.

stituting Eqs. (A1)–(A3) into Eq. (3) yields

$$\begin{aligned} \Delta [\text{CO}_3^{2-}] = & \frac{S}{S_0} \frac{\partial [\text{CO}_3^{2-}]}{\partial \text{DIC}} \Delta \text{sDIC} + \frac{S}{S_0} \frac{\partial [\text{CO}_3^{2-}]}{\partial \text{Alk}} \Delta \text{sAlk} \\ & + \frac{\partial [\text{CO}_3^{2-}]}{\partial \text{fw}} \Delta \text{fw} + \frac{\partial [\text{CO}_3^{2-}]}{\partial T} \Delta T \\ & + \frac{\partial [\text{CO}_3^{2-}]}{\partial S} \Delta S, \end{aligned} \quad (4)$$

whose individual terms are shown in Fig. 7. Cross-correlations among the variables in the Taylor sum may lead to imprecise results in some locations.

Our analysis demonstrates that variations in sDIC are the primary driver of $[\text{CO}_3^{2-}]$ variability in the tropical Pacific, with smaller, opposing contributions from sAlk and freshwater (Fig. 7). Contributions from temperature and salinity play comparatively smaller roles. As the east/central equatorial Pacific is associated with a large vertical gradient in sDIC (Fig. 2), variations in vertical exchange here likely dominate surface sDIC variability. El Niño events are associated with relaxed trade winds and less upwelling of DIC-rich water in the east/central equatorial Pacific, raising the surface $[\text{CO}_3^{2-}]$; the opposite is true during La Niña events, when we would expect anomalously low surface $[\text{CO}_3^{2-}]$ in these regions. In our simulation, the ENSO index has a strong negative (positive) correlation with surface sDIC ($[\text{CO}_3^{2-}]$) in the east/central equatorial Pacific (not shown).

The leading EOF of surface $[\text{CO}_3^{2-}]$ variability in the North Pacific (20–70° N) is characterized by a broad, horseshoe-shaped area of $[\text{CO}_3^{2-}]$ off the coast of North America that is out of phase with $[\text{CO}_3^{2-}]$ in the western subtropical gyre (Fig. 9a). This EOF explains 35 % of the variance in surface $[\text{CO}_3^{2-}]$ in the North Pacific basin and its spa-

tial pattern resembles the PDO. The wavelet spectrum for the associated first PC (Fig. 8b) reveals high spectral power at 20–30 year periods, similar to the PDO, but also detects significant spectral power at high frequencies (3–7 years), and low frequencies (> 60 years). We define a model PDO as the leading EOF of sea surface temperature anomalies in the North Pacific (20–70° N); it has a generally realistic spatial pattern and amplitude (Deser et al., 2012b). The model PDO is highly correlated with the leading PC of surface $[\text{CO}_3^{2-}]$ in the North Pacific ($r = -0.94$), suggesting that the PDO has a large influence on surface $[\text{CO}_3^{2-}]$ in this region.

We decompose the leading EOF of surface $[\text{CO}_3^{2-}]$ in the North Pacific into contributions from sDIC, sAlk, freshwater, temperature, and salinity using Eq. (4). Our analysis reveals that sDIC contributes to most of the variability in surface $[\text{CO}_3^{2-}]$ in this region, with smaller, opposing contributions from sAlk and freshwater, and near-zero contributions from temperature and salinity (Fig. 9). Positive/warm phases of the PDO are associated with southerly winds off the coast of California, suppressing the upwelling of carbon-rich water and elevating surface $[\text{CO}_3^{2-}]$, while the western subtropical gyre experiences increased upwelling of DIC and lower surface $[\text{CO}_3^{2-}]$. The opposite is true during negative/cold phases of the PDO, when we find anomalously high (low) surface $[\text{CO}_3^{2-}]$ in the eastern (western) North Pacific. We find a significant positive correlation between the PDO and surface $[\text{CO}_3^{2-}]$ off the coast of California and a significant negative correlation between the PDO and surface $[\text{CO}_3^{2-}]$ in the western North Pacific subtropical gyre (not shown).

In the North Atlantic (40–80° N), the leading EOF of surface $[\text{CO}_3^{2-}]$ explains 18 % of the variance and is characterized by a tripole pattern, with nodes centered in the subpolar gyre, the inter-gyre region, and the subtropical gyre (Fig. 10). The wavelet time-frequency diagram of the lead-

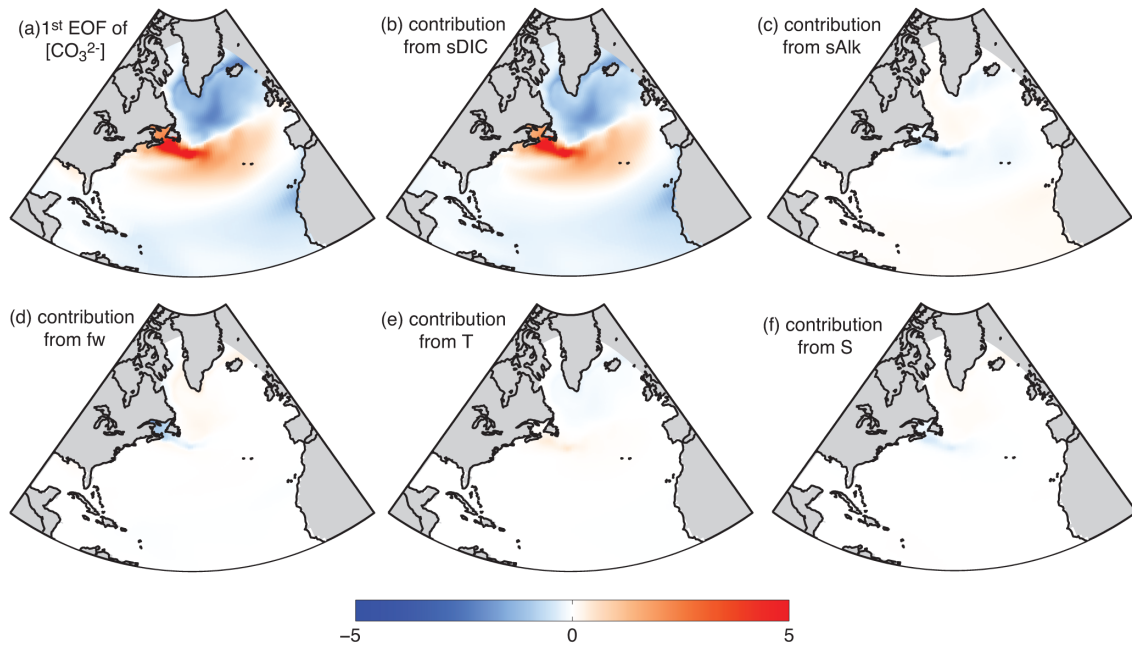


Figure 10. As in Fig. 7, but for the North Atlantic.

ing PC (Fig. 8c) looks like a red noise process (Torrence and Compo, 1998) with significant spectral power at 20–40 year and longer periods. A Taylor series decomposition of the variability in this region using Eq. (4) reveals that, similar to the other two regions, sDIC variability is the dominant driver of $[\text{CO}_3^{2-}]$ variations here, with smaller, opposing contributions from sAlk, freshwater, and salinity in the inter-gyre region (Fig. 10) where variance in $[\text{CO}_3^{2-}]$ is at a maximum (Fig. 4). The leading PC of $[\text{CO}_3^{2-}]$ in this region is weakly correlated with the NAO ($r = -0.16$) and the Atlantic Multi-decadal Oscillation (AMO, $r = -0.33$). Positive phases of the NAO and AMO are associated with anomalously high $[\text{CO}_3^{2-}]$ in the subpolar and subtropical gyres and anomalously low $[\text{CO}_3^{2-}]$ in the inter-gyre region, though the weak correlations preclude further investigation of the mechanistic link between these modes of climate variability and surface $[\text{CO}_3^{2-}]$ in this region.

6 Conclusions

We analyze output from a 1000-year, pre-industrial control simulation of an Earth System Model in order to quantify, characterize, and understand the drivers of variability in the surface ocean carbonate ion concentration. We find the highest variability in the tropical Pacific, where the model simulates large vertical gradients in $[\text{CO}_3^{2-}]$, and at the boundaries between the subtropical and subpolar gyres in the Northern Hemisphere. High variance coupled with high autocorrelation results in long detection times (> 50 years) for anthropogenic trends in $\Omega_{\text{aragonite}}$ at these locations, whereas

we find short detection times (~ 15 years) at the open ocean time series sites and in the Southern Ocean, where variance is at a minimum. Our results suggest that the detection timescale for anthropogenic trends in pH is shorter than that for $\Omega_{\text{aragonite}}$, owing to smaller noise-to-signal ratios and lower autocorrelation in pH. We further characterize the surface $[\text{CO}_3^{2-}]$ variance in the Tropical Pacific, North Pacific, and North Atlantic using EOF and wavelet analysis. The leading mode of variability in the tropical Pacific exhibits statistically significant spectral power at 3–7 year timescales and is highly correlated with ENSO. In the North Pacific, the leading EOF of $[\text{CO}_3^{2-}]$ has the characteristic horseshoe pattern of the PDO, with peak spectral power at 20–30 year timescales. In the North Atlantic, the wavelet decomposition of the leading mode of variability appears similar to a red noise process, with weak correlations with the NAO and AMO. In all locations, surface $[\text{CO}_3^{2-}]$ variability is driven by variability in sDIC, with smaller opposing contributions from sAlk and freshwater dilution. Temperature and salinity variability contributes very little to $[\text{CO}_3^{2-}]$ variance. In all regions, climate variability imposes changes in ocean circulation that likely mediate the vertical and lateral advection of DIC into the surface ocean.

While the spatial pattern of surface $[\text{CO}_3^{2-}]$ variability in our model is similar to that reported in other studies (e.g., Friedrich et al., 2012), a recent study of natural carbon uptake variability from centuries-long simulations of six ESMs suggests that we should expect the magnitude of this variability to differ from model to model (Resplandy et al., 2015). Thus, the detection times for trends in $[\text{CO}_3^{2-}]$ and pH, which themselves are a function of the variability, are also likely to differ

from model to model. Future investigations characterizing the uncertainty in internal variability from ESM ensembles are therefore needed.

Our results provide meaningful perspective on the trends in $\Omega_{\text{aragonite}}$ and pH reported in the literature. Our statistical analysis of model output suggests that, due to low variance in $[\text{CO}_3^{2-}]$ and pH, significant anthropogenic trends in $\Omega_{\text{aragonite}}$ and pH are already or nearly detectable at the open-ocean time series sites, whereas high variability and autocorrelation in $[\text{CO}_3^{2-}]$ may obscure the detection of anthropogenic trends in $\Omega_{\text{aragonite}}$ in the tropical Pacific, North Pacific, and North Atlantic. Our characterization of the spatial pattern and frequency of natural $[\text{CO}_3^{2-}]$ variability in these high variance regions suggests that it is largely driven by large-scale modes of internal climate variability, such as ENSO, PDO, NAO, and AMO. One should consider the phasing of these modes of climate variability, therefore, when interpreting trends calculated from carbonate chemistry data collected in these regions.

Ongoing efforts aimed at optimizing the ocean acidification observational network (e.g., the Global Ocean Acidification Observing Network, GOA-ON) stand to benefit from the results presented here. Our analysis suggests that frequent, sustained observations are required to capture the natural variability that is key to detecting significant anthropogenic trends in surface $\Omega_{\text{aragonite}}$ and pH. In regions where variability is muted (e.g., the subtropical gyres), detectable trends can emerge from sparse or short records, whereas, in regions with heightened variability (e.g., the equatorial Pacific), the observational record must be denser and longer in order to detect the same trend. Further, our finding that the detection timescale for pH is shorter than that for $\Omega_{\text{aragonite}}$ nearly everywhere highlights the need for continued underway and float-based pH measurements.

Appendix A: Freshwater contributions to $[\text{CO}_3^{2-}]$ variability

To separate the contribution from freshwater fluxes on DIC and Alk, we use the following two equations for the first and second terms of Eq. (3),

$$\begin{aligned} \frac{\partial [\text{CO}_3^{2-}]}{\partial \text{DIC}} \Delta \text{DIC} &= \frac{\partial [\text{CO}_3^{2-}]}{\partial (S/S_0 s \text{DIC})} \Delta (S/S_0 s \text{DIC}) \\ &= \frac{s \text{DIC}}{S_0} \frac{\partial [\text{CO}_3^{2-}]}{\partial \text{DIC}} \Delta S \\ &\quad + \frac{S}{S_0} \frac{\partial [\text{CO}_3^{2-}]}{\partial \text{DIC}} \Delta s \text{DIC} \end{aligned} \quad (\text{A1})$$

$$\begin{aligned} \frac{\partial [\text{CO}_3^{2-}]}{\partial \text{Alk}} \Delta \text{Alk} &= \frac{\partial [\text{CO}_3^{2-}]}{\partial (S/S_0 s \text{Alk})} \Delta (S/S_0 s \text{Alk}) \\ &= \frac{s \text{Alk}}{S_0} \frac{\partial [\text{CO}_3^{2-}]}{\partial \text{Alk}} \Delta S \\ &\quad + \frac{S}{S_0} \frac{\partial [\text{CO}_3^{2-}]}{\partial \text{Alk}} \Delta s \text{Alk}. \end{aligned} \quad (\text{A2})$$

We extract the first terms from Eqs. (A1) and (A2), as they represent the contribution from freshwater forcing (fw) on $[\text{CO}_3^{2-}]$,

$$\begin{aligned} \frac{\partial [\text{CO}_3^{2-}]}{\partial \text{fw}} \Delta \text{fw} &= \frac{s \text{DIC}}{S_0} \frac{\partial [\text{CO}_3^{2-}]}{\partial \text{DIC}} \Delta S \\ &\quad + \frac{s \text{Alk}}{S_0} \frac{\partial [\text{CO}_3^{2-}]}{\partial \text{Alk}} \Delta S. \end{aligned} \quad (\text{A3})$$

Acknowledgements. N. S. Lovenduski is thankful for support from NSF (OCE-1155240), NOAA (NA12OAR4310058), and NASA (NNX11AF53G). NCAR is sponsored by the National Science Foundation. Computational facilities were provided by the Climate Simulation Laboratory, which is managed by CISL at NCAR. Wavelet software was provided by C. Torrence and G. Compo, and is available at <http://paos.colorado.edu/research/wavelets/>.

Edited by: C. Heinze

References

- Antonov, J. I., Seidov, D., Boyer, T. P., Locarnini, R. A., Mishonov, A. V., Garcia, H. E., Baranova, O. K., Zweng, M. M., and Johnson, D. R.: World Ocean Atlas 2009, Volume 2: Salinity, in: NOAA Atlas NESDIS 69, edited by: Levitus, S., US Government Printing Office, Washington, DC, 184 pp., 2010.
- Bates, N. R., Astor, Y. M., Church, M. J., Currie, K., Dore, J. E., Gonzalez-Davila, M., Lorenzoni, L., Muller-Karger, F., Olafsson, J., and Santana-Casiano, J. M.: A time-series view of changing ocean chemistry due to ocean uptake of anthropogenic CO₂ and ocean acidification, *Oceanography*, 27, 126–141, 2014.
- Beaulieu, C., Henson, S. A., Sarmiento, Jorge L., Dunne, J. P., Doney, S. C., Rykaczewski, R. R., and Bopp, L.: Factors challenging our ability to detect long-term trends in ocean chlorophyll, *Biogeosciences*, 10, 2711–2724, doi:10.5194/bg-10-2711-2013, 2013.
- Bretherton, C. S., Widmann, M., Dymnikov, V. P., Wallace, J. M., and Bladé, I.: The effective number of spatial degrees of freedom of a time-varying field, *J. Climate*, 12, 1990–2009, 1999.
- Brix, H., Gruber, N., and Keeling, C. D.: Interannual variability of the upper ocean carbon cycle at station ALOHA near Hawaii, *Global Biogeochem. Cy.*, 18, GB4016, doi:10.1029/2004GB002245, 2004.
- Ciais, P. and Sabine, C.: Carbon and other biogeochemical cycles, in: *Climate Change 2013: the Physical Science Basis. Contribution of Working Group I to the Fifth Assessment Report of the Intergovernmental Panel on Climate Change*, edited by: Stocker, T. F., Qin, D., Plattner, G.-K., Tignor, M. M. B., Allen, S. K., Boschung, J., Nauels, A., Xia, Y., Bex, V., and Midgley, P. M., Cambridge University Press, Cambridge, UK, New York, NY, USA, 1535 pp., 2013.
- Conrad, C. J. and Lovenduski, N. S.: Climate-driven variability in the Southern Ocean carbonate system, *J. Climate*, 28, 5335–5350, 2015.
- Danabasoglu, G., Bates, S. C., Briegleb, B. P., Jayne, S. R., Jochum, M., Large, W. G., Peacock, S., and Yeager, S. G.: The CCSM4 ocean component, *J. Climate*, 25, 1361–1389, 2012.
- Deser, C., Phillips, A., Bourdette, V., and Teng, H.: Uncertainty in climate change projections: the role of internal variability, *Clim. Dynam.*, 38, 527–546, 2012a.
- Deser, C., Phillips, A. S., Tomas, R. A., Okumura, Y. M., Alexander, M. A., Capotondi, A., Scott, J. D., Kwon, Y.-O., and Ohba, M.: ENSO and Pacific decadal variability in the Community Climate System Model Version 4, *J. Climate*, 25, 2622–2651, 2012b.
- Doney, S. C., Lindsay, K., Fung, I., and John, J.: Natural variability in a stable, 1000-yr global coupled climate–carbon cycle simulation, *J. Climate*, 19, 3033–3054, 2006.
- Doney, S. C., Fabry, V. J., Feely, R. A., and Kleypas, J. A.: Ocean acidification: the other CO₂ problem, *Annu. Rev. Mar. Sci.*, 1, 169–192, 2009.
- Fabry, V. J., McClintock, J. B., Mathis, J. T., and Grebmeier, J. M.: Ocean acidification at high latitudes: the bellwether, *Oceanography*, 22, 160–171, 2009.
- Fay, A. R. and McKinley, G. A.: Global open-ocean biomes: mean and temporal variability, *Earth Syst. Sci. Data*, 6, 273–284, doi:10.5194/essd-6-273-2014, 2014.
- Feely, R. A., Sabine, C. L., Lee, K., Berelson, W., Kleypas, J., Fabry, V. J., and Millero, F. J.: Impact of anthropogenic CO₂ on the CaCO₃ system in the oceans, *Science*, 305, 362–366, 2004.
- Feely, R. A., Doney, S. C., and Cooley, S. R.: Ocean acidification: present conditions and future changes in a high-CO₂ world, *Oceanography*, 22, 36–47, 2009.
- Feely, R. A., Sabine, C. L., Byrne, R. H., Millero, F. J., Dickson, A. G., Wanninkhof, R., Murata, A., Miller, L. A., and Greeley, D.: Decadal changes in the aragonite and calcite saturation state of the Pacific Ocean, *Global Biogeochem. Cy.*, 26, doi:10.1029/2011GB004157, GB3001, doi:10.1029/2011GB004157, 2012.
- Fox-Kemper, B., Danabasoglu, G., Ferrari, R., Griffies, S., Hallberg, R., Holland, M., Maltrud, M., Peacock, S., and Samuels, B.: Parameterization of mixed layer eddies, III: Implementation and impact in global ocean climate simulations, *Ocean Model.*, 39, 61–78, 2011.
- Friedrich, T., Timmermann, A., Abe-Ouchi, A., Bates, N. R., Chikamoto, M. O., Church, M. J., Dore, J. E., Gledhill, D. K., Gonzalez-Davila, M., Heinemann, M., Ilyina, T., Jungclaus, J. H., McLeod, E., Mouchet, A., and Santana-Casiano, J. M.: Detecting regional anthropogenic trends in ocean acidification against natural variability, *Nat. Clim. Change*, 2, 167–171, 2012.
- Garcia, H. E., Locarnini, R. A., Boyer, T. P., Antonov, J. I., Zweng, M. M., Baranova, O. K., and Johnson, D. R.: World Ocean Atlas 2009, Volume 4: Nutrients (phosphate, nitrate, silicate), in: NOAA Atlas NESDIS 71, edited by: Levitus, S., US Government Printing Office, Washington, DC, 398 pp., 2010.
- Gent, P. R. and McWilliams, J. C.: Isopycnal mixing in ocean circulation models, *J. Phys. Oceanogr.*, 20, 150–155, 1990.
- Hauri, C., Gruber, N., Vogt, M., Doney, S. C., Feely, R. A., Lachkar, Z., Leinweber, A., McDonnell, A. M. P., Munnich, M., and Plattner, G.-K.: Spatiotemporal variability and long-term trends of ocean acidification in the California Current System, *Biogeosciences*, 10, 193–216, doi:10.5194/bg-10-193-2013, 2013.
- Henson, S. A., Sarmiento, J. L., Dunne, J. P., Bopp, L., Lima, I., Doney, S. C., John, J., and Beaulieu, C.: Detection of anthropogenic climate change in satellite records of ocean chlorophyll and productivity, *Biogeosciences*, 7, 621–640, doi:10.5194/bg-7-621-2010, 2010.
- Hunke, E. C. and Lipscomb, W. H.: CICE: the Los Alamos sea ice model user's manual, version 4, Los Alamos Natl. Lab. Tech. Report, LA-CC-06-012, Los Alamos, NM, USA, 2008.
- Hurrell, J. W., Holland, M. M., Gent, P. R., Ghan, S., Kay, J. E., Kushner, P. J., Lamarque, J. F., Large, W. G., Lawrence, D.,

- Lindsay, K., Lipscomb, W. H., Long, M. C., Mahowald, N., Marsh, D. R., Neale, R. B., Rasch, P., Vavrus, S., Vertenstein, M., Bader, D., Collins, W. D., Hack, J. J., Kiehl, J., and Marshall, S.: The Community Earth System Model: a framework for collaborative research, *B. Am. Meteorol. Soc.*, 94, 1339–1360, 2013.
- Ilyina, T., Zeebe, R. E., Maier-Reimer, E., and Heinze, C.: Early detection of ocean acidification effects on marine calcification, *Global Biogeochem. Cy.*, 23, GB1008 doi:10.1029/2008GB003278, 2009.
- Keller, K. M., Joos, F., and Raible, C. C.: Time of emergence of trends in ocean biogeochemistry, *Biogeosciences*, 11, 3647–3659, doi:10.5194/bg-11-3647-2014, 2014.
- Key, R. M., Kozyr, A., Sabine, C. L., Lee, K., Wanninkhof, R., Bullister, J. L., Feely, R. A., Millero, F. J., Mordy, C., and Peng, T. H.: A global ocean carbon climatology: results from Global Data Analysis Project (GLODAP), *Global Biogeochem. Cy.*, 18, GB4031, doi:10.1029/2004GB002247, 2004.
- Large, W. G., McWilliams, J. C., and Doney, S. C.: Oceanic vertical mixing: a review and a model with a nonlocal boundary layer parameterization, *Rev. Geophys.*, 32, 363–403, 1994.
- Lauvset, S. K., Gruber, N., Landschützer, P., Olsen, A., and Tjiputra, J.: Trends and drivers in global surface ocean pH over the past 3 decades, *Biogeosciences*, 12, 1285–1298, doi:10.5194/bg-12-1285-2015, 2015.
- Lawrence, D. M., Oleson, K. W., Flanner, M. G., Fletcher, C. G., Lawrence, P. J., Levis, S., Swenson, S. C., and Bonan, G. B.: The CCSM4 Land Simulation, 1850–2005: assessment of surface climate and new capabilities, *J. Climate*, 25, 2240–2260, 2011.
- Le Quéré, C., Orr, J. C., Monfray, P., Aumont, O., and Madec, G.: Interannual variability of the oceanic sink of CO₂ from 1979 through 1997, *Global Biogeochem. Cy.*, 14, 1247–1265, 2000.
- Lehner, F., Joos, F., Raible, C. C., Mignot, J., Born, A., Keller, K. M., and Stocker, T. F.: Climate and carbon cycle dynamics in a CESM simulation from 850 to 2100 CE, *Earth Syst. Dynam.*, 6, 411–434, doi:10.5194/esd-6-411-2015, 2015.
- Lenton, A. and Matear, R. J.: Role of the Southern Annular Mode (SAM) in Southern Ocean CO₂ uptake, *Global Biogeochem. Cy.*, 21, GB2016, doi:10.1029/2006GB002714, 2007.
- Lindsay, K., Bonan, G. B., Doney, S. C., Hoffman, F. M., Lawrence, D. M., Long, M. C., Mahowald, N. M., Keith Moore, J., Randerson, J. T., and Thornton, P. E.: Preindustrial-control and twentieth-century carbon cycle experiments with the Earth System Model CESM1(BGC), *J. Climate*, 27, 8981–9005, 2014.
- Locarnini, R. A., Mishonov, A., Antonov, J. I., Boyer, T. P., Garcia, H. E., Baranova, O. K., Zweng, M. M., and Johnson, D. R.: World Ocean Atlas 2009, Volume 1: Temperature, in: NOAA Atlas NESDIS 68, edited by: Levitus, S., US Government Printing Office, Washington, DC, 184 pp., 2010.
- Long, M. C., Lindsay, K., Peacock, S., Moore, J. K., and Doney, S. C.: Twentieth-century oceanic carbon uptake and storage in CESM1(BGC), *J. Climate*, 26, 6775–6800, 2013.
- Lovenduski, N. S., Gruber, N., Doney, S. C., and Lima, I. D.: Enhanced CO₂ outgassing in the Southern Ocean from a positive phase of the Southern Annular Mode, *Global Biogeochem. Cy.*, 21, GB2026, doi:10.1029/2006GB002900, 2007.
- Lovenduski, N. S., Fay, A. R., and McKinley, G. A.: Observing multidecadal trends in Southern Ocean CO₂ uptake: what can we learn from an ocean model?, *Global Biogeochem. Cy.*, 29, 416–426, 2015.
- Majkut, J. D., Carter, B. R., Frölicher, T. L., Dufour, C. O., Rodgers, K. B., and Sarmiento, J. L.: An observing system simulation for Southern Ocean carbon dioxide uptake, *Philos. T. Roy. Soc. A*, 372, 20130046, doi:10.1098/rsta.2013.0046, 2014.
- McKinley, G. A., Takahashi, T., Buitenhuis, E., Chai, F., Christian, J. R., Doney, S. C., Jiang, M.-S., Lindsay, K., Moore, J. K., Le Quéré, C., Lima, I., Murtugudde, R., Shi, L., and Wetzel, P.: North Pacific carbon cycle response to climate variability on seasonal to decadal timescales, *J. Geophys. Res.-Oceans*, 111, C07S06 doi:10.1029/2005JC003173, 2006.
- Moore, J. K. and Braucher, O.: Sedimentary and mineral dust sources of dissolved iron to the world ocean, *Biogeosciences*, 5, 631–656, doi:10.5194/bg-5-631-2008, 2008.
- Moore, J. K., Doney, S. C., and Lindsay, K.: Upper ocean ecosystem dynamics and iron cycling in a global three-dimensional model, *Global Biogeochem. Cy.*, 18, GB4028, doi:10.1029/2004GB002220, 2004.
- Moore, J. K., Lindsay, K., Doney, S. C., Long, M. C., and Miumi, K.: Marine ecosystem dynamics and biogeochemical cycling in the Community Earth System Model [CESM1(BGC)]: comparison of the 1990s with the 2090s under the RCP4.5 and RCP8.5 scenarios, *J. Climate*, 26, 9291–9312, 2013.
- Neale, R. B., Richter, J., Park, S., Lauritzen, P. H., Vavrus, S. J., Rasch, P. J., and Zhang, M.: The mean climate of the Community Atmosphere Model (CAM4) in forced SST and fully coupled experiments, *J. Climate*, 26, 5150–5168, 2013.
- Orr, J. C., Fabry, V. J., Aumont, O., Bopp, L., Doney, S. C., Feely, R. A., Gnanadesikan, A., Gruber, N., Ishida, A., Joos, F., Key, R. M., Lindsay, K., Maier-Reimer, E., Matear, R., Monfray, P., Mouchet, A., Najjar, R. G., Plattner, G.-K., Rodgers, K. B., Sabine, C. L., Sarmiento, J. L., Schlitzer, R., Slater, R. D., Totterdell, I. J., Weirig, M.-F., Yamanaka, Y., and Yool, A.: Anthropogenic ocean acidification over the twenty-first century and its impact on calcifying organisms, *Nature*, 437, 681–686, 2005.
- Resplandy, L., Séférian, R., and Bopp, L.: Natural variability of CO₂ and O₂ fluxes: what can we learn from centuries-long climate models simulations?, *J. Geophys. Res.-Oceans*, 120, 384–404, 2015.
- Séférian, R., Bopp, L., Swingedouw, D., and Servonnat, J.: Dynamical and biogeochemical control on the decadal variability of ocean carbon fluxes, *Earth Syst. Dynam.*, 4, 109–127, doi:10.5194/esd-4-109-2013, 2013.
- Séférian, R., Ribes, A., and Bopp, L.: Detecting the anthropogenic influences on recent changes in ocean carbon uptake, *Geophys. Res. Lett.*, 41, 5968–5977, 2014.
- Sutton, A. J., Feely, R. A., Sabine, C. L., McPhaden, M. J., Takahashi, T., Chavez, F. P., Friederich, G. E., and Mathis, J. T.: Natural variability and anthropogenic change in equatorial Pacific surface ocean pCO₂ and pH, *Global Biogeochem. Cy.*, 28, 131–145, 2014.
- Thomas, H., Friederike Prowe, A. E., Lima, I. D., Doney, S. C., Wanninkhof, R., Greatbatch, R. J., Schuster, U., and Corbière, A.: Changes in the North Atlantic Oscillation influence CO₂ uptake in the North Atlantic over the past 2 decades, *Global Biogeochem. Cy.*, 22, GB4027, doi:10.1029/2007GB003167, 2008.

Torrence, C. and Compo, G. P.: A practical guide to wavelet analysis, *B. Am. Meteorol. Soc.*, 79, 61–78, 1998.

Verdy, A., Dutkiewicz, S., Follows, M. J., Marshall, J., and Czaja, A.: Carbon dioxide and oxygen fluxes in the Southern Ocean: mechanisms of interannual variability, *Global Biogeochem. Cy.*, 21, GB2020, doi:10.1029/2006GB002916, 2007.

Weatherhead, E. C., Reinsel, G. C., Tiao, G. C., Meng, X.-L., Choi, D., Cheang, W.-K., Keller, T., DeLuisi, J., Wuebbles, D. J., Kerr, J. B., Miller, A. J., Oltmans, S. J., and Frederick, J. E.: Factors affecting the detection of trends: statistical considerations and applications to environmental data, *J. Geophys. Res.-Atmos.*, 103, 17149–17161, 1998.

© 2015. This work is published under <http://creativecommons.org/licenses/by/3.0/>(the “License”). Notwithstanding the ProQuest Terms and Conditions, you may use this content in accordance with the terms of the License.